


Workforce Investment: The Act, The Boards & The Future

Josh Copus
Director, Member & Board Relations
National Association of WorkForce Boards
Washington, DC
copusj@nawb.org
2020.857.7900



NAWB

- **“Voice” for the Nation’s 550+ WIBs**
 - 11,000 to 12,000 businesses serve on local WIBs
- **22 Member Board**
 - Laurie Moran (VA) Chair, Chamber of Commerce
 - Majority Business
 - Education (Community College of LA)
 - Labor (Philadelphia AFL-CIO)
 - Chair of the State Chair’s Association
- **NAWB Provides:**
 - Professional Development
 - Technical Assistance and Partner Development
 - Advocacy

National Association
of Workforce Boards

2

- As It Was and As We Know It Today...
- The Future of Workforce Development
 - Raising the Bar (...As NAWB Sees It)
 - The Decisions of Washington

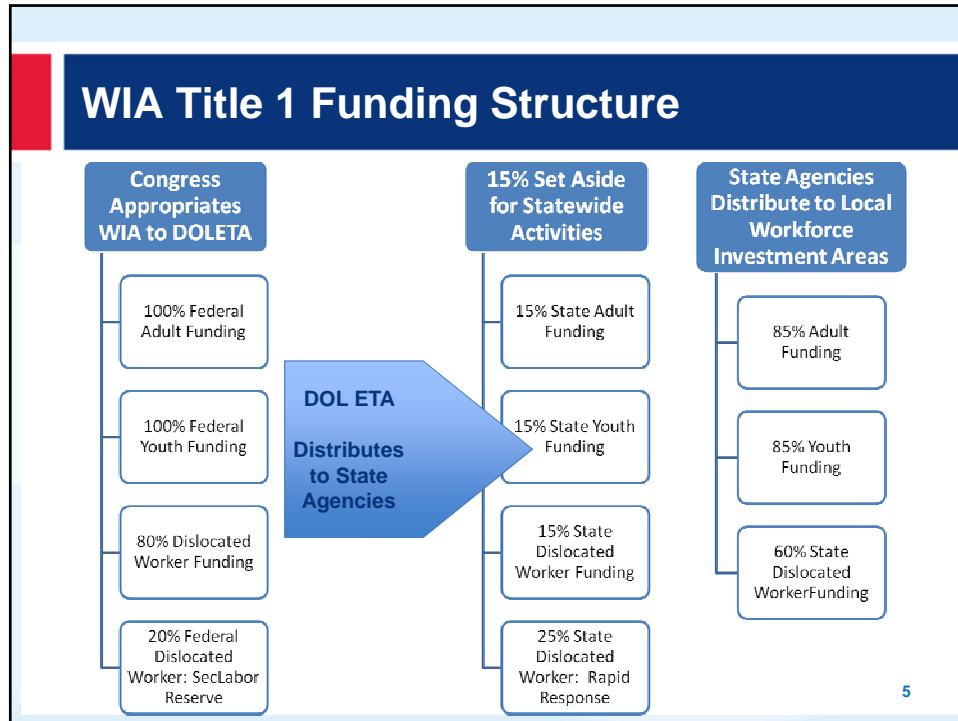
History – Skill Building Is Not New

A horizontal timeline with a light blue background and a dark blue bar at the top. The title 'History – Skill Building Is Not New' is in white on the dark blue bar. Below the bar, five red rectangular boxes are arranged horizontally, each containing an icon and text. The boxes are: 1. Land Grant Act of 1862 (graduation cap icon), 2. Smith-Hughes Act of 1917 (barn icon), 3. New Deal legislation of the 1930s (worker with tools icon), 4. Job Training Partnership Act of 1982 (flag and gear icon), 5. Workforce Investment Act of 1998 (circular arrows icon).

Year	Legislation	Icon
1862	Land Grant Act of 1862	Graduation cap
1917	Smith-Hughes Act of 1917	Barn
1930s	New Deal legislation of the 1930s	Worker with tools
1982	Job Training Partnership Act of 1982	Flag and gear
1998	Workforce Investment Act of 1998	Circular arrows

National Association of Workforce Boards

4



Pressures of Performance

Performance outcomes for funding...

Common Measures:

- Entry into unsubsidized employment
- Retention in unsubsidized employment
- Earnings
- (youth) placement into employment or education
- (youth) attainment of degree or certificate
- (youth) literacy and numeracy gains

One-Stop Career Centers

- ~ 3000 centers in the US & Territories
- Comprehensive
 - Full assessments for individuals
 - Some basic skills classrooms (technology)
 - Business services
 - Job order assistance
 - Recruitment assistance (wage analysis – space)
 - Customized screening (fee & non-fee)
- “Satellites”
 - Resource room
 - Internet/self-service focused

What is Workforce Development System?



National Association
of Workforce Boards

9

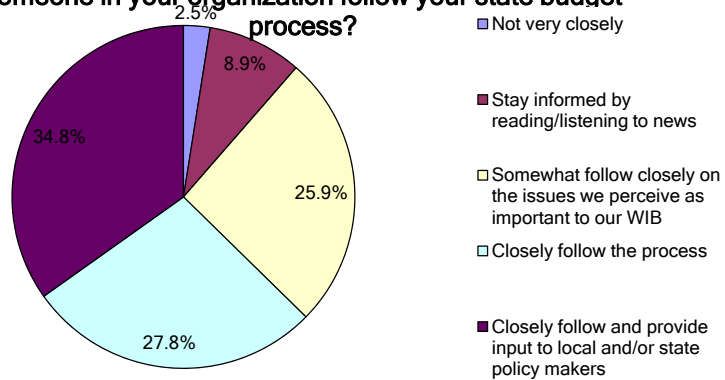
Raising the Bar...

- Thinking Beyond WIA: looking at the multiple funding streams, organizations, departments and initiatives that have a stake in workforce
- Excellent understanding of local labor market and ability to describe it to key audience (business, education, government, job seekers)
- Convener of critical discussions on workforce issues
- Constantly evaluating and re-evaluating the investments being made

National Association
of Workforce Boards

Boards, Budgets, and Policy Making

As part of your WIBs work, how closely do you or someone in your organization follow your state budget process?

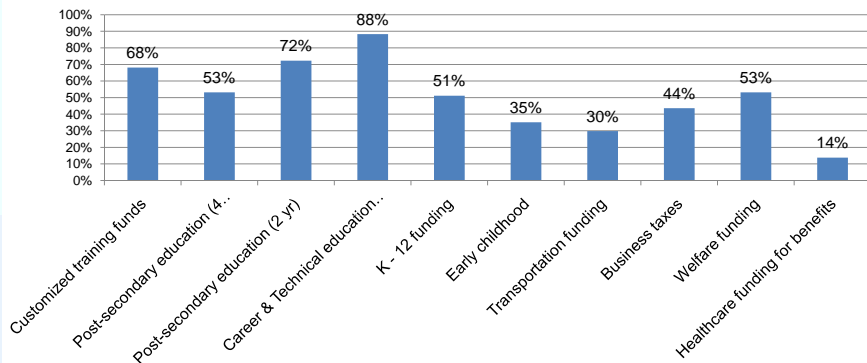


National Association of Workforce Boards

5

Boards, Budgets, and Policy Making

If you follow your state's budget, what issues do you focus on?



National Association of Workforce Boards

5

The Decisions of Washington – FY 11

- House passed FY 11 CR bill, HR 1, proposed the elimination of all WIA funding and cuts to job training programs **totaling \$3.6 billion**
- **\$307 million cut to WIA** formula programs, a 10% cut. A 6% cut if you factor in creation of Workforce Innovation Fund
- Reduced the amount of WIA funds held at the state level, from 15% to 5%

National Association
of Workforce Boards

Impact... on the ground

	Increase	Same	Lay-offs	Elimination
Administrative (non-direct service)	0.6% (2)	23.8% (76)	40.1% (128)	7.5% (24)
Business/Employer Representatives	2.4% (7)	24.7% (73)	27.7% (82)	8.4% (25)
Case Managers	2.9% (10)	19.8% (67)	55.2% (187)	4.4% (15)
Career Resource Room Specialists	1.6% (5)	19.3% (60)	40.5% (126)	11.6% (36)
Field Coordinators	1.4% (4)	14.4% (42)	20.9% (61)	6.8% (20)
Follow Up Specialists	2.0% (6)	11.6% (34)	29.9% (88)	10.5% (31)
Trainers	2.0% (6)	16.3% (48)	30.8% (91)	8.5% (25)
Youth Workers	4.1% (12)	24.7% (73)	32.9% (97)	7.8% (23)

National Association
of Workforce Boards

Joint Survey NAWB/NAWDP: 06/10/2011 – 06/30/2011

Workforce Investment Legislation - 2011

- Senate
 - Retains business-led local WIBs w/business chair
 - Increased expectation for coordination
 - Increased expectation for staff expertise
 - State WIB currently being discussed
- House
 - Discussion becoming more serious
 - Workforce Improvement Act (Congressman McKeon)
- Prospects for passage...

Resources and How to Connect...

- Connecting with State WIB
 - Talk to the Governor and/or the Governor's Liaison
 - Read and Share WIA 101 Publication
- Connecting with Local WIBs
 - Visit www.workforceinvestmentworks.com to find WIBs in your state serving as “leaders” in workforce development

THANK YOU!

The National Association of Workforce Boards

1133 19th Street NW – Suite 400

Washington DC 20036

202.857.7900

Forum 2012

March 10-13

Washington Hilton – Washington, DC